

Pet Parents Guide To:

—ALLERGIES—

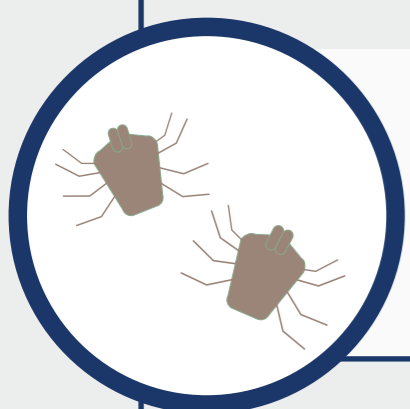
Common Allergens



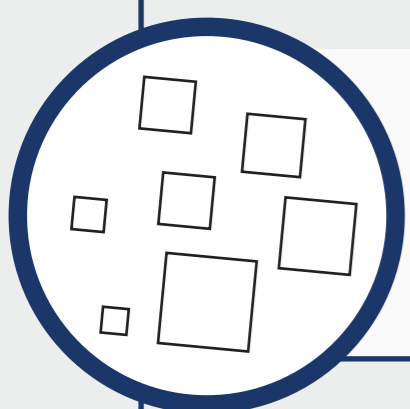
Pollen From
Trees & Grasses



Mold
Spores



Dust &
House Mites



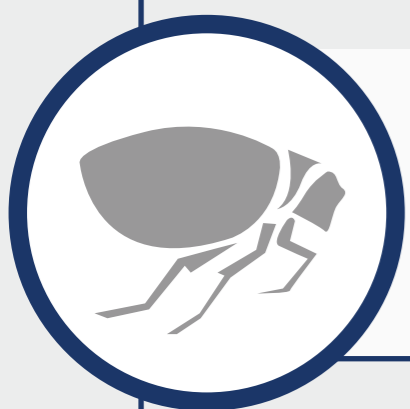
Dander



Feathers



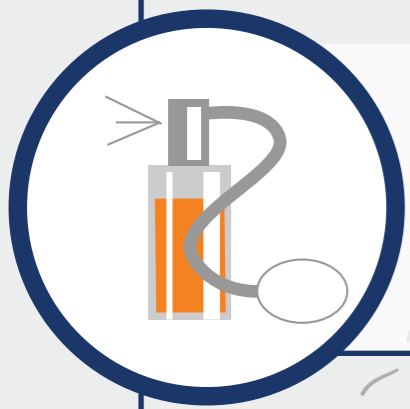
Food
Ingredients



Fleas



Prescription
Drugs



Perfumes



Cleaning
Products



Fabrics, Rubber
or Plastic Material

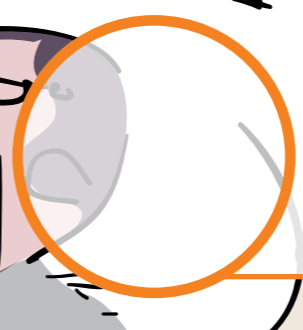
Allergy Symptoms



Itchy Ears &
Ear Infections



Itchy,
Runny Eyes



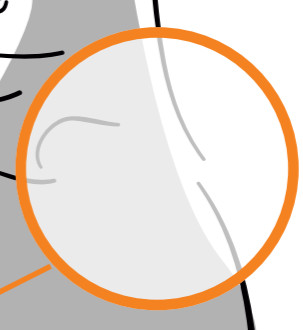
Sneezing



Vomiting



Snoring Due to
Inflamed Throat

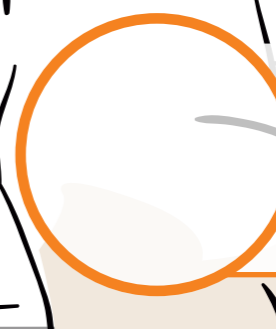


Itchy, Red, Moist
or Scabbed Skin

Itchy, Back or
Base of Tail



Diarrhea



Swollen
Paws

—How to Help—

- Flea control - try to prevent allergies caused by fleas
- Frequently vacuum - help reduce dust allergies
- Weekly bathing - use a medicated shampoo to help soothe itchy and irritated skin
- Talk to your vet

Find more educational resources at www.prosensepet.com

PROSENSE[®]

Source: <http://pets.webmd.com/dogs/allergies-dogs#2>